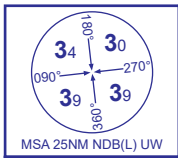
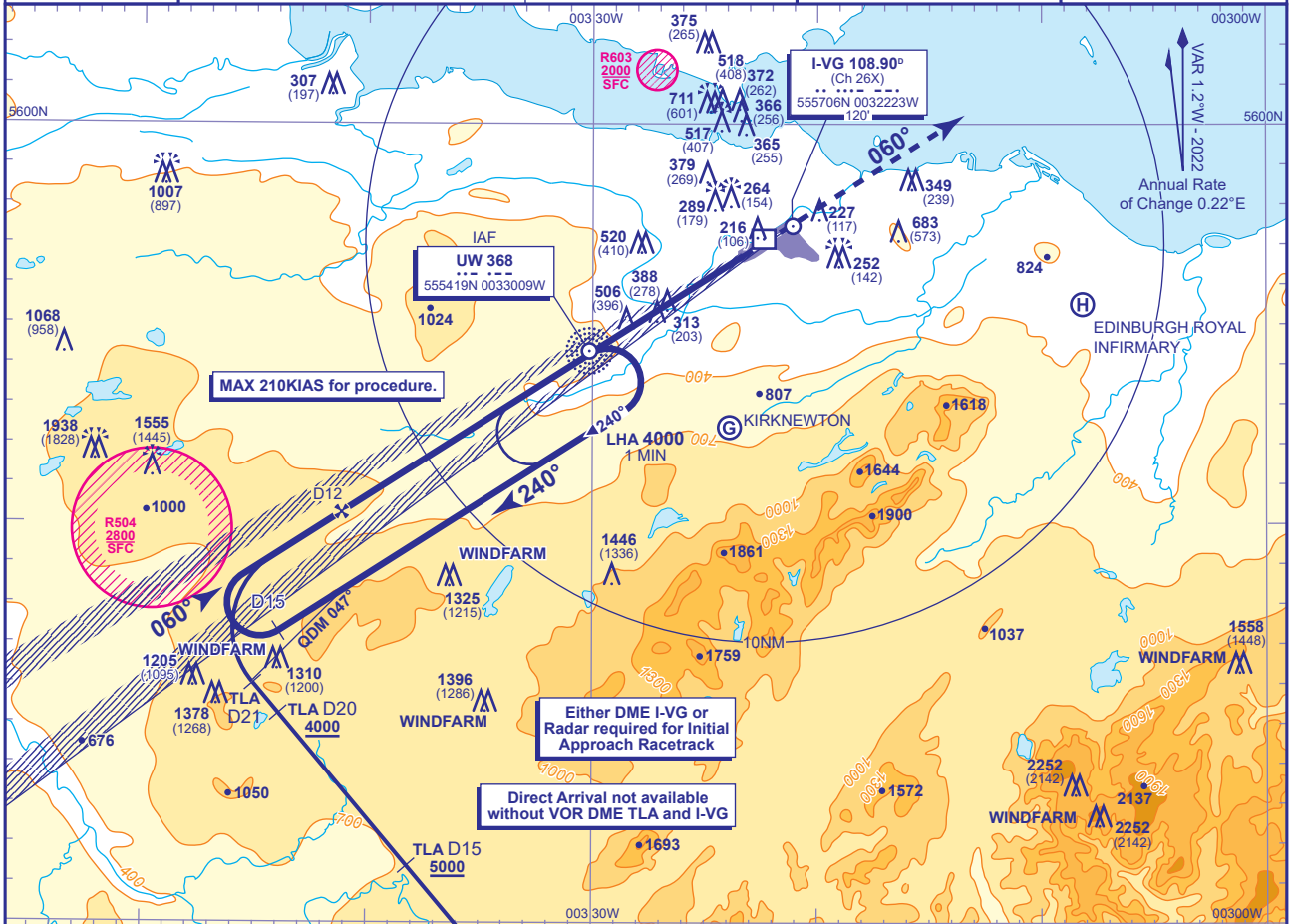


INSTRUMENT APPROACH CHART - ICAO

EDINBURGH
ILS/DME/NDB(L)
RWY 06
(ACFT CAT A,B,C,D)

APP	121.205	EDINBURGH APPROACH	AD ELEVATION	136
TWR	118.705	EDINBURGH TOWER	THR ELEVATION	110
	121.755	EDINBURGH GROUND	OBSTACLE ELEVATION	2252 AMSL (2142) (ABOVE THR)
RAD	121.205, 128.980	EDINBURGH RADAR		
ATIS	131.355	EDINBURGH INFORMATION	BEARINGS ARE MAGNETIC	

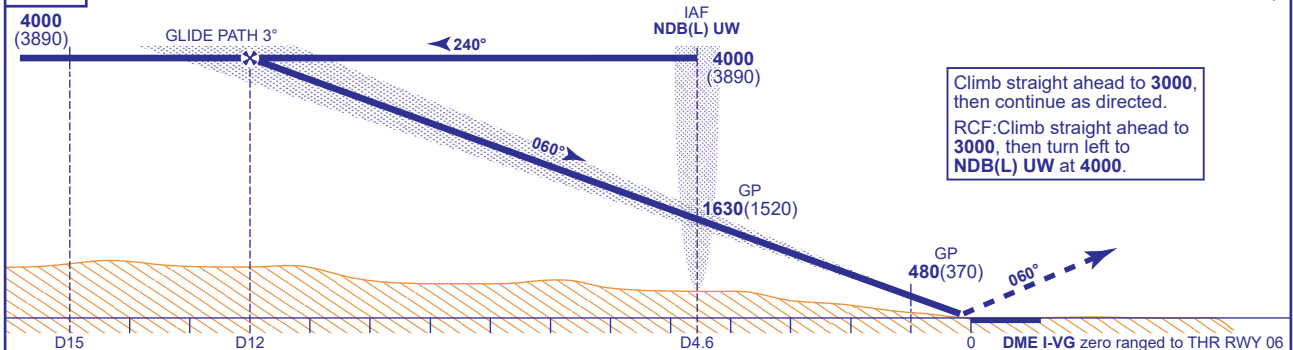
TRANSITION ALTITUDE
6000

RECOMMENDED PROFILE GLIDE PATH 3°, 320FT/NM

DME I-VG	10	9	8	7	6	5	4	3	2	1
ALT(HGT)	3350(3240)	3030(2920)	2710(2600)	2390(2280)	2070(1960)	1760(1650)	1440(1330)	1120(1010)	800(690)	480(370)

RDH 54

Arrival not below 4000. Shuttle in hold if necessary.



Climb straight ahead to 3000, then continue as directed.
RCF: Climb straight ahead to 3000, then turn left to NDB(L) UW at 4000.

Aircraft Category	A	B	C	D	Rate of descent	G/S KT	160	140	120	100	80
OCA (OCH)	CAT I	245(135)	252(142)	262(152)	271(161)	FT/MIN	850	740	640	530	420
VM(C)OCA (OCH AAL)	CAT II	158(48)	169(59)	182(72)	195(85)						
	Total Area	780(644)	980(844)	1470(1334)	2020(1884)						
	North of RWY 06/24	680(544)	820(684)	920(784)	1120(984)						

DIRECT ARRIVAL VIA VOR DME TLA VOR DME (IAF) as cleared, fly outbound on VOR TLA R321 descending **not below 6000**. From TLA VOR R321 DME 11 continue descent to cross TLA DME 15 **not below 5000** and TLA DME 20 **not below 4000**. At TLA DME 21 (NDB(L) UW QDM 047°) turn right to intercept the LOC and continue as for main procedure.

AIRCRAFT UNABLE TO RECEIVE DME Advise ATC. Radar Ranges will be provided at 15NM outbound and at 12NM and 4NM inbound.

NOTE See AD2.22 / 1.d and 4.a for speed restrictions.

CHANGE (4/25): KIRKNEWTON GLIDER SITE ADDED.